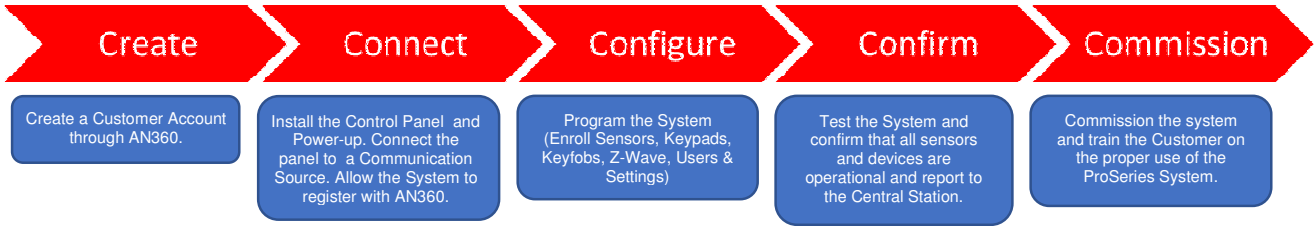


PROHP-EU Security System Control Panel

Installation Guide

This Installation Guide provides the basic steps to quickly and easily install the Burglar and Fire Alarm Control Panel, using the built-in programming defaults. The control panel is designed for secure wall mounting. Refer to the full Installation Guide for additional information.

Follow the simple steps below to configure and install the ProSeries Control Panel.



Create a Customer Account

Registration, Programming and Testing is conducted through the AlarmNet 360™ cloud-based management platform using the Resideo Pro App. (Refer to page 3).

1. Create a Customer Account using AN360 cloud-based management platform.

Connect the PROHP-EU (refer to Figure 1 and 2)

Select a location for the panel to maximize cellular signal level (if used) and wireless radio signal levels. Install the panel, as follows:

1. Remove the PROHP-EU cover [A] and separate the middle frame [B] and rear mounting plate [C] by releasing the upper [D] and lower locking tabs [E].
 2. Route the system wiring and ethernet cable (if used) through the opening in the wall mount or through any of the knockouts (notch) [F] that are provided on each side of the mounting plate. Remove the thin plastic from the knockout (notch), if required. (refer to Figure 1). System wiring should extend 8-10cm through the opening. Refer to local regulations in your area for correct wire gauge and length.
 3. Secure the rear mounting plate [C] to the wall with four screws [G] (not provided) Use the integrated Bubble Level [H] to ensure the panel is level).
 4. Install the tamper screw [I] (not provided), if required.
 5. Insert the Control Panel Middle Frame to the mounting plate by aligning the slots [J] on the Middle Frame with the cleats [K] on the mounting plate and sliding the unit up until the upper locking tabs [D] on the wall mount are engaged, then push it toward the wall to engage the lower tab [E] and lock it in place.
 6. Secure the middle frame to the mounting plate with six (6) provided flat-head screws [L] (open the Control's left [M] and right [N] side covers to access the upper points).
 7. Open the Control's left [M] and right [N] side covers, as required.
 8. Install the PRO Series Communications Modules, as required and secure with the provided screws (Refer to Figure 2).
 9. Insert the Battery Pack [O] into the mid-frame (ensure THIS SIDE UP on battery faces out) and install the retaining clip [P]. Secure the battery clip with the provided short pan head screw [Q].
 10. Connect the red and black battery cables to the battery and the control panel + and – contacts.
 11. Remove screw securing the clear cover on the power supply. Open the cover to gain access to the power supply terminals. Connect the AC power source to the terminals. **Do not apply power at this time.**
 12. Connect the Power Supply DC connector and Ethernet cable (if used).
 13. Install the plastic wire clamp and secure with (2) provided long pan head screws. If used, secure the Ethernet cable using wire ties.
 14. Install the Control Panel Cover and secure it with the provided flat head set screw [R].
- Note:** Do not connect the control or router to a receptacle controlled by a switch. Allow up to 2 minutes for power-up.
15. Plug the power supply into a 230VAC outlet. Upon power-up the panel's blue LED illuminates. (Refer to Table 1 for LED Status)

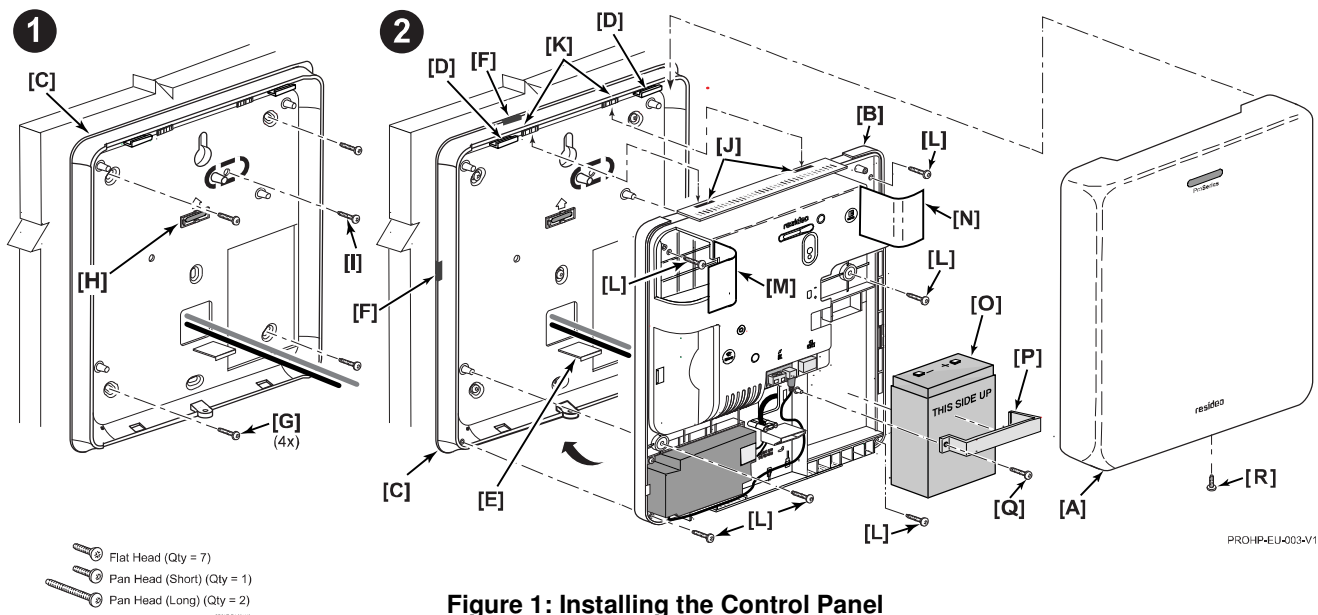
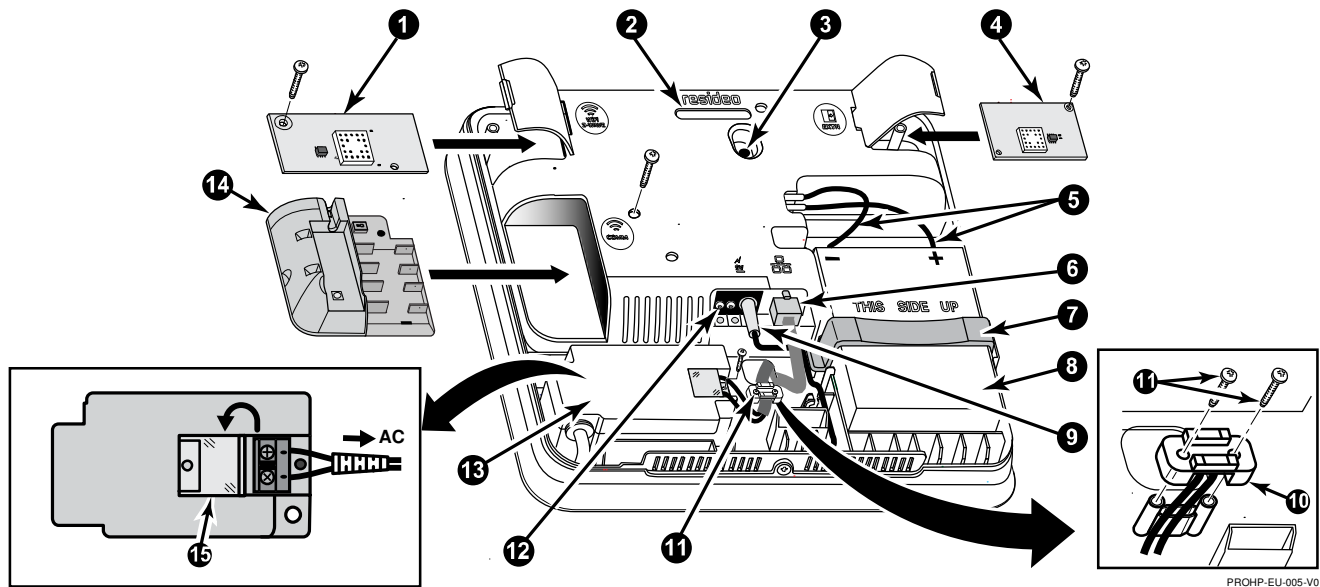


Figure 1: Installing the Control Panel

Connect the PROHP-EU (Continued)

Optional Communications Module Note: Refer to the *Specific Module Installation* section in the *Installation & Reference Guide* for installation information and instructions.



PROHP-EU Control Panel Components					
1	PROWiFi-EU Module	6	Ethernet Connector	11	Long Pan Head Screws (2)
2	LED Light Hole	7	Battery Clip	12	DC Terminals
3	Front Tamper	8	Battery	13	Power Supply
4	Zigbee Module	9	Power Supply DC Connector	14	PROLITE-EU Series Module
5	Battery Cables (2)	10	Plastic Wire Clamp	15	Clear Cover (flips open)

Figure 2: Installing the Control Panel

Table 1 - PROHP-EU LED Status

LED Status	Meaning
Steady	AC Connected, Panel ON, Battery Charged
Blinking	AC present, Panel ON, Battery Trouble (Low Battery, Battery malfunction or not detected)
Off	No AC Power, Panel ON
Off	No AC Power, Panel OFF

Connect the PROHP-EU

The Resideo Pro App is required to set up the communication links on the panel. A home router is required for Ethernet and/or Wi-Fi communications. An LTE Communicator on the panel is required for cellular data communication. The router must be powered on and connected for Wi-Fi operation (alarm reporting) to occur.

- Connect the Resideo Pro App to the panel via Bluetooth.
 - Open the panel cover to enable Bluetooth pairing with the Resideo Pro App.
 - Run the Resideo Pro App on your smartphone.
 - Select the "Set Up Product".
 - Select the Pro Security Panel and allow the smart device to search for the panel (Ensure that Bluetooth is turned ON).
 - Check the smart device, after a moment the panel is displayed.
 - Select the panel.
 - Enter the panel's CRC then select "Enter".
 - Enter the Installer code (4112) then select "Connect".
 - The panel and the App are connected.
- Use the Resideo Pro App (Refer to page 3) to set up the Wi-Fi connection and/or LTE settings. Follow the instructions provided on the App screens.

Configure the PROHP-EU

IMPORTANT: Once the unit is powered up and the programming procedure is underway, do not remove power, disconnect the battery, or open the case. Disconnecting power or activating the tamper switch can cause unpredictable programming results. Registration and Programming is conducted via the AlarmNet 360 cloud-based management platform. On a Smart Device open the Resideo Pro App (Refer to page 3).

Note: It is recommended that a keypad or a siren be enrolled, to enable sound notifications, before enrolling sensors

- Program the panel settings and enroll wireless devices using AN360. Use Sensor Learn mode to program sensors.
- Setup Wi-Fi Keypads, and Z-Wave devices

Confirm the PROHP-EU System Installation

The following test modes are available:

- Test Sensors (Walk Test)
- Test Communicator (AN360 only)

Enter Test mode (Walk Test)

1. Enter User (PIN) code + 5 + 1 (walk). The system enters Walk Test mode.
2. The external sounder should sound for about 1 second then turn off. The "Test in Progress" display appears only on the Keypad that started the test.
3. Open each protected door and window in turn and listen for three beeps from the Keypad. Each faulted detection point should appear on the display. The display clears when the door or window is closed.
4. Walk in front of any interior motion detectors (if used) and listen for three beeps. Each detector should appear on the display when it is activated. The display clears when no motion is detected. Note that if wireless motion detectors are used, there is a 3-minute delay between activations to conserve battery life.
5. Test all smoke detectors, following the manufacturer's instructions.
When all detection points have been checked and are intact (closed), there should be no zone numbers displayed.
6. Exit test mode by entering the User (PIN) code + 1 (Off)

Commission the PROHP-EU System

1. Commission the system via AN360.

This system must be checked by a qualified technician at least once every three (3) years.

Shutting Down the System

To avoid corrupting the control's memory, before removing power from the system:

1. Disarm the system.
2. Wait 30 seconds.
3. Unplug the power supply.
4. Disconnect the battery.

Features and Capacities

Feature	Details
Partitions	4 (independent)
Maximum Devices	<ul style="list-style-type: none"> • 250 Intrusion/Fire Zones <ul style="list-style-type: none"> - 127 SiX Series devices (sensors, keyfobs, keypads) • 32 SiX Series Keyfobs • 8 SiX Series Wireless Keypads / Touchscreens
Z-Wave	Supports up to 78 Z-Wave devices with the following maximums: Light Modules, Shades, etc 60 Door Locks 6 Garage Door Controls 6 Z-Wave Thermostats* 6
Bluetooth	Smartphone disarming via Bluetooth
Wiselink	Wiselink compatibility with Motion Viewers
Security Codes	96 User (PIN) codes (Includes Master User #2)
Event Log	4,000 events

Specifications

Dimensions:	226mm W x 226mm H x 30mm D
Voltage Input:	P/N R300-11433 – 9.3 VDC, 1.5A
48-Hour Backup Battery:	PROHPBAT-EU – Sealed Lead-Acid battery rated at 4V, 8.6 Ah

Approval Listings

- EN50131-1
- EN50131-3
- EN50131-5-3
- EN50131-6

Warranty, Training, Documentation and Technical Support

PLEASE, before you contact Technical Support, be sure you:

READ THE INSTRUCTIONS AND VIEW THE INSTRUCTIONAL VIDEOS

- Determine that the power supply and/or backup battery are supplying proper voltages.
- Verify your programming information where applicable.
- Note the proper model number of this product, and the version level (if known) along with any documentation that came with the product.
- Note your Resideo customer number and/or company name.
- Additional documentation including full Installation and Setup and User Guides for the PROHP-EU Control Panel can be found by scanning the provided QR code with a smart device

Keeping this information handy will make it easier for us to serve you quickly and effectively.



RESIDEO EMEA Security Technical Support (Office hours – UTC+3)

EN +44 8002 793643 FR +33 801 840 536 ES +34 900 933 295 IT +39 0 399 590 905



Instructional Videos



Documentation



Resideo Pro App



RFproducts@resideo.com

**only if you have an assigned Sale Support Specialist =>*

EMEASecuritySalesSupport@resideo.com

Recommendations for Proper Protection

The Following Recommendations for the Location of Smoke and Burglary Detection Devices Help Provide Proper Coverage for the Protected Premises.

Recommendations for Smoke and Heat Detectors

With regard to the number and placement of smoke/heat detectors, we subscribe to the recommendations contained in the National Fire Protection Association's (NFPA) Standard #72 noted below.

Early warning smoke detection is best achieved by the installation of smoke detection equipment in all rooms and areas of the household as follows: For minimum protection a smoke detector should be installed outside of each separate sleeping area, and on each additional floor of a multi-floor family living unit, including basements. The installation of smoke detectors in kitchens, attics (finished or unfinished), or in garages is not normally recommended.

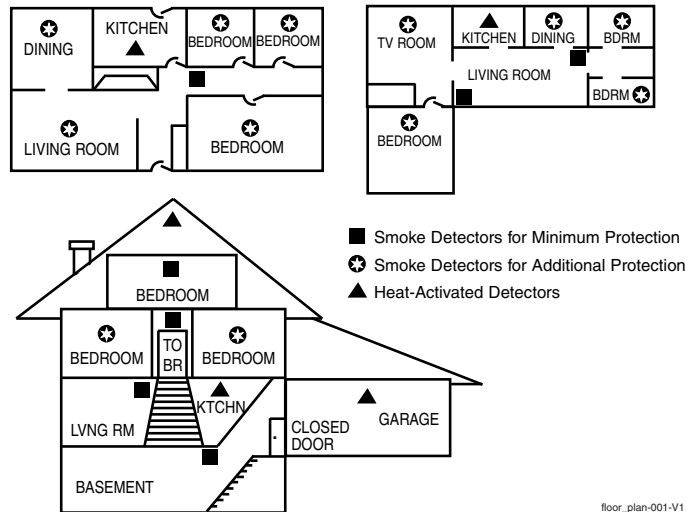
For additional protection it is recommended that you install heat or smoke detectors in the living room, dining room, bedroom(s), kitchen, hallway(s), attic, furnace room, utility and storage rooms, basements and attached garages.

In addition, we recommend the following:

- Install a smoke detector inside every bedroom where a smoker sleeps.
- Install a smoke detector inside every bedroom where someone sleeps with the door partly or completely closed. Smoke could be blocked by the closed door. Also, an alarm in the hallway outside may not wake up the sleeper if the door is closed.
- Install a smoke detector inside bedrooms where electrical appliances (such as portable heaters, air conditioners or humidifiers) are used.
- Install smoke detectors at both ends if the hallway is more than 12 meters long.
- Install smoke detectors in any room where an alarm control is located, or in any room where alarm control connections to an AC source or phone lines are made. If detectors are not so located, a fire within the room could prevent the control from reporting a fire or an intrusion.

Recommendations for Proper Intrusion Protection

- For proper intrusion coverage, sensors should be located at every possible point of entry to a home or premises. This would include any skylights that may be present, and the upper windows in a multi-level building.
- In addition, we recommend that radio backup be used in a security system. This will ensure that alarm signals can be sent to the alarm monitoring station if the communications are out of order (if connected to an alarm monitoring station).



The product should not be disposed of with other household waste. Check for the nearest authorized collection centers or authorized recyclers. The correct disposal of end-of-life equipment will help prevent potential negative consequences for the environment and human health.



Any attempt to reverse-engineer this device by decoding proprietary protocols, de-compiling firmware, or any similar actions is strictly prohibited.



Sécurité Communications SAS (SECOM)
 1198, Avenue du Docteur Maurice Donat
 06250 Mougins - FRANCE



Ademco 1 Ltd., 200 Berkshire Place
 Winnersh Triangle, Berkshire,
 RG41 5RD – UNITED KINGDOM

Product must be tested at least once each year

This product manufactured by Resideo Technologies, Inc. and its affiliates.

resideo

© 2021 Resideo Technologies, Inc
 www.resideo.com



R800-26790A 4/21 Rev. A