

Installation and Setup Guide

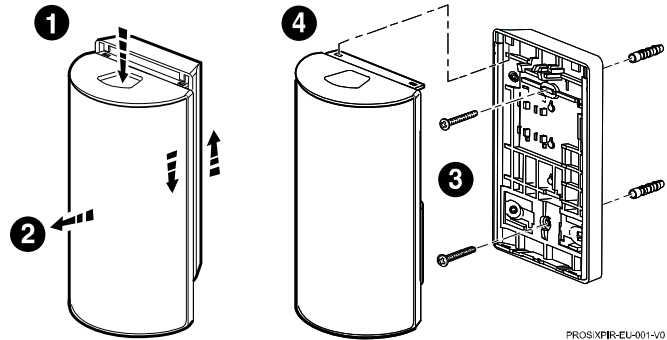
The PROSIXPIR-EU wireless passive infrared motion sensor is intended for use with Control Panels that supports SiX™ series devices.

Note: Installation shall be done in accordance with local regulations.

MOUNTING

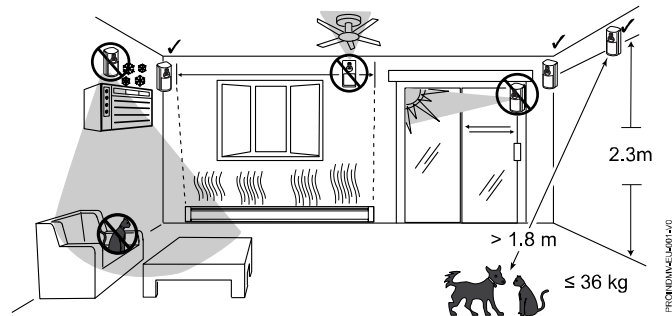
1. Press the latch on the top of the device.
2. Separate the rear case/wall mount.
3. Secure the rear case/wall mount in the desired location with two screws. (See the **Mounting Options** section.)
4. Slide the device onto the rear case/wall mount bracket.

Note: Rear case must be mounted on a stud, solid wall, or with a robust wall anchor.



Mounting Considerations

- Mount indoors in a temperature-controlled environment.
- Mounting height should be 2.1 – 2.7 m, with an optimal range height of 2.3 m.
- Allow a clear line-of-sight to all areas to protect.
- Do not aim detector at windows, especially those in direct sunlight, or at heat sources (fireplaces, radiators and heating vents, etc.).
- Avoid mounting in areas with high humidity (such as garages) to minimize the risk of false alarms.
- Do not aim detector at moving objects such as fans.
- Do not paint or cover the detection or camera lens.
- For use in applications with pets up to 36 kg.



In Applications with Animals:

- Mount with the center of the device at 2.3 m.
- Mount where pet cannot come within 1.8 m of the sensor by climbing on furniture, stairs, boxes or other objects.
- Test each installation to determine exact level of animal immunity; levels vary based on environmental differences and amount of heat radiated by an animal.

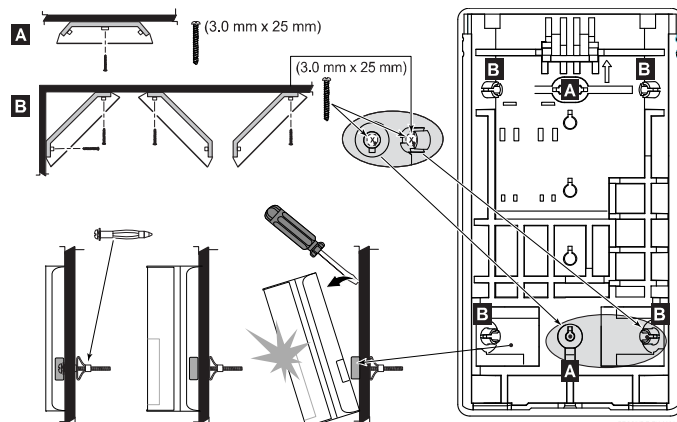
Mounting Options

After enrolling, verify adequate signal strength by conducting a sensor test with the device installed in its intended mounting location (see the controller's instructions). Adjust the device mounting location and orientation as necessary to achieve maximum signal strength

The sensor can be mounted on the wall or in corners:

- **[A]** = Wall mounting holes.
- **[B]** = Corner mounting holes.

Note: The rear tamper plate **MUST** be mounted to a stud, solid wood, or with a robust wall anchor.



ENROLLING

You must enroll the device in the Control Panel. Programming and Testing is conducted through the AlarmNet 360™ cloud-based management platform using the Resideo Pro App. The Sensor Learn mode is used to program sensors.

With the panel in Programming Mode:

1. Press down on the top latch and separate the front and back covers.
2. Remove the battery tab to activate and begin the enrollment process.
3. The green LED beneath the battery flashes (up to about 20 seconds*) during enrollment.

The device sends data, and the panel registers the device.

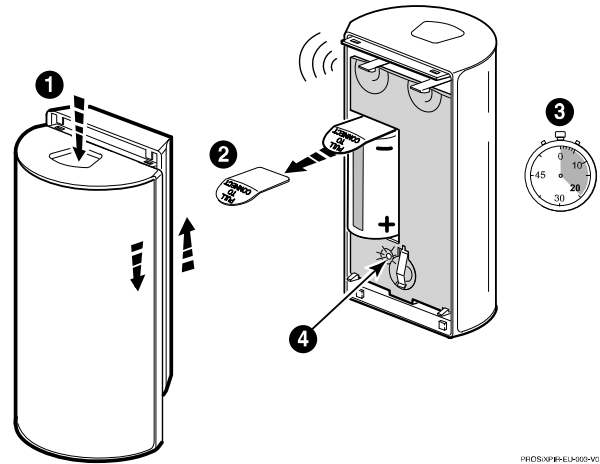
* Enrollment time varies depending on the signal strength between the device and the panel.

4. Enrollment is confirmed when the LED is ON for 3 seconds.

Note: If the sensor is not successfully enrolled during the enrollment period, the LED turns off and the device enters a sleep mode. Activate a tamper or remove and reinsert the battery to restart the enrollment process.

Note: Pet Immunity is selectable: Off or Up to 36 kg.

Note: After enrolled in a system, the device cannot be used with another Control Panel until it is removed from the current panel. See the panel instructions for details.

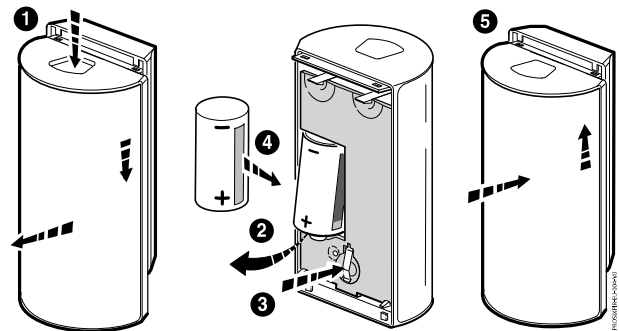


24-HOUR ENROLLMENT DELETION AND DEFAULT

If the sensor is enrolled in a Control Panel different than the intended panel, and you are unable to delete it from the unintended panel, reset default the device to factory default setting:

1. Remove the cover.
2. Remove the battery.
3. Press and hold the tamper switch.
4. Reinsert the battery and release the tamper switch when the LED flashes rapidly for 2 seconds.
5. Install the cover.

This procedure is available for 24 hours after enrollment with a panel and the device remains powered (battery installed).



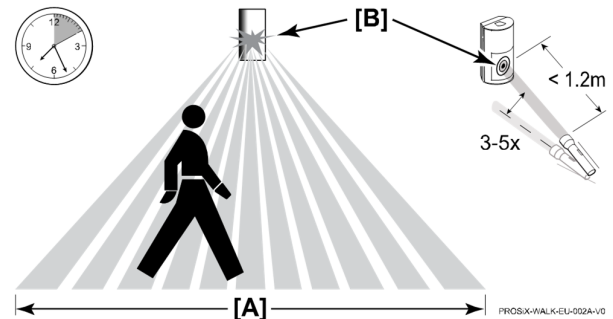
WALK TEST

After power up/enrollment, the sensor automatically enters a 10-minute Walk Test mode.

Note: the system must be **disarmed** to enter Test Mode and can only be armed again after exiting the Walk Test mode.

1. Walk through the detection area [A].
2. Observe the LED come ON [B].
3. After 10 minutes, the sensor automatically exits the Test mode, disables the LED, and enters a normal operation mode.

To restart a 10-minute Test period, activate the Test mode with the panel (see the panel instructions), or use the flashlight feature (see the following section).



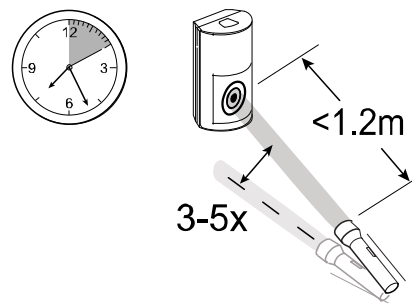
FLASHLIGHT FEATURE

The flashlight feature is only available for the first 24 hours after the first power up, or until the system is first armed. **This feature is no longer available after the first system arming.**

Each time the flashlight feature is used, and the system is disarmed, the walk test timer restarts for 10 minutes.

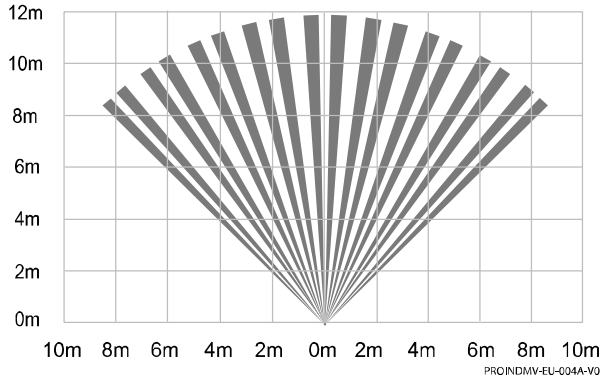
1. Use a flashlight with a bright light beam and stand within 1.2 m of the sensor.
2. Swing the light beam past the sensor lens 3-5 times, holding the beam on the window for 0.5 second each pass.

Note: the flashlight feature only initiates or restarts the Test Mode and does not change any other sensor settings.

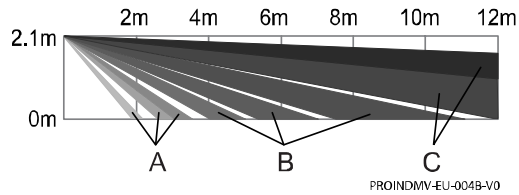


DETECTION PATTERNS

Top View



Side View



Zones

A	18	Lower
B	46	Intermediate
C	36	Long

BATTERY REPLACEMENT

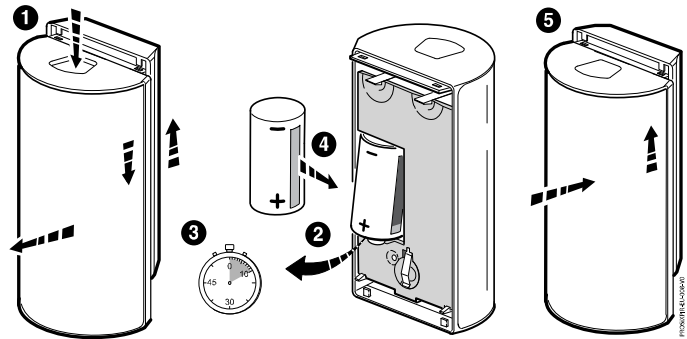
1. Press the latch at the top of the sensor and slide the front cover down to remove it.
2. Remove the battery and wait 10 seconds, then insert a new battery.

Note: See the **Specifications** section for recommended replacement batteries.

3. Place the front and back covers together and slide the front cover upward as shown.

BATTERY CAUTION: Risk of fire, explosion and burns. Do not recharge, disassemble, heat above 55°C, or incinerate. Dispose of used batteries properly. Keep away from children.

Note: Constant exposure to high or low temperature or high humidity may reduce battery life.



SPECIFICATIONS

Range:	12 m x 17 m
Wall Mounting Height:	2.1 m – 2.7 (Optimal 2.3 m)
Battery:	1 x 3V, Lithium
	<ul style="list-style-type: none"> • Panasonic CR123A • Duracell DL123A • Duracell DL123

RF Frequency:	2.4GHz
Tamper:	Cover and Wall (reported separately to panel)
Operating Temperature:	-10°~ +55°C
Relative Humidity:	95% max., non-condensing
Dimensions (mm):	106 (H) x 60 (W) x 41 (D)
Weight:	115 g (net weight)



The product should not be disposed of with other household waste. Check for the nearest authorized collection centers or authorized recyclers. The correct disposal of end-of-life equipment will help prevent potential negative consequences for the environment and human health.

Product must be tested at least once each year

Any attempt to reverse-engineer this device by decoding proprietary protocols, de-compiling firmware, or any similar actions is strictly prohibited.

REFER TO THE INSTALLATION INSTRUCTIONS FOR THE CONTROL PANEL WITH WHICH THIS DEVICE IS USED, FOR DETAILS REGARDING LIMITATIONS OF THE ENTIRE ALARM SYSTEM.

SUPPORT & WARRANTY INFORMATION

For the latest documentation, warranty, and support, please go to: www.resideo.com



Sécurité Communications SAS (SECOM)
1198, Avenue du Docteur Maurice Donat
06250 Mougins - FRANCE



Ademco 1 Ltd., 200 Berkshire Place
Winnersh Triangle, Berkshire,
RG41 5RD – UNITED KINGDOM

PROSIXPIR-EU



R800-26473A 10/21 Rev A

resideo

© 2021 Resideo Technologies, Inc.
www.resideo.com