

### Installation and Setup Guide

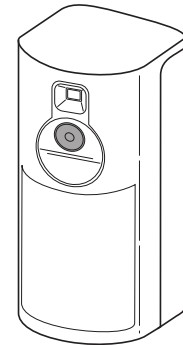
#### GENERAL INFORMATION

The PROINDMV-EU is a battery powered, wireless indoor motion detector with a built-in video camera and is designed for use with Control Panels that support SIX™ series devices. The detector is powered by three 3-volt, Lithium batteries that provide up to 4 years of battery life.

**Note:** Installation shall be done in accordance with local regulations.

#### FEATURES

- No wiring or remote power required. Fully portable battery powered camera allows for flexibility in selecting locations
- Provides live video viewing functionality
- Spread Spectrum, Interactive, AES encrypted wireless technology provides optimum signal integrity and security
- CMOS camera sensor with a wide angle 90° lens
- Night vision with one white LED
- Fresnel lens motion detection 12m and 90° detection pattern
- Camera sends color video.

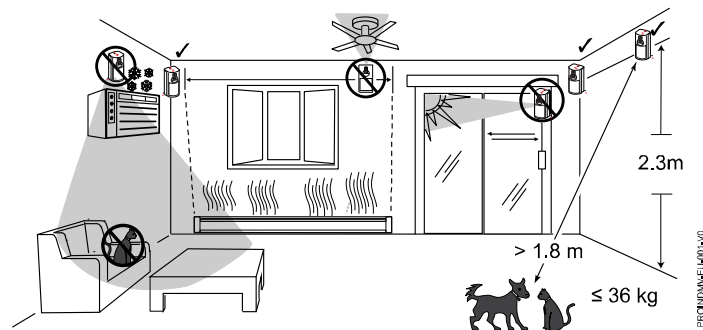


#### INSTALLATION GUIDELINES

Programming and RF testing should be done while the device is in its intended mounting location to ensure good communication between the Control Panel and the device.

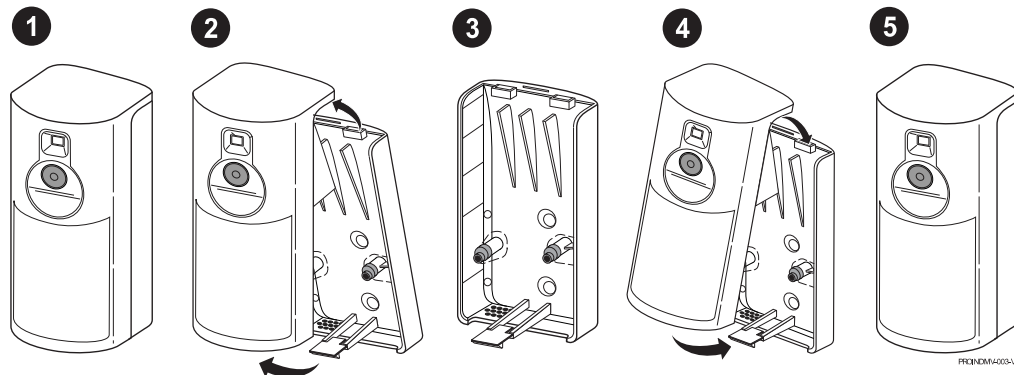
##### Mounting Considerations:

- Mount indoors in a temperature-controlled environment.
- Mounting height should be 2.1 – 2.7 m, with an optimal range height of 2.3 m.
- Allow a clear line-of-sight to all areas to protect.
- Do not aim detector at windows, especially those in direct sunlight, or at heat sources (fireplaces, radiators, and heating vents, etc.).
- Avoid mounting in areas with high humidity (such as garages) to minimize the risk of false alarms.
- Do not aim detector at moving objects such as fans.
- Do not paint or cover the detection or camera lens.
- For use in applications with pets up to 36 kg.



#### MOUNTING

1. Press the latch on the bottom of the device.
2. Separate the rear case/wall mount.
3. Secure the rear case/wall mount in the desired location with two screws. (See the **Mounting Options** section.)  
**Note:** Rear case must be mounted on a stud, solid wall, or with a robust wall anchor.
4. Slide the device onto the rear case/wall mount bracket.



## Mounting Options

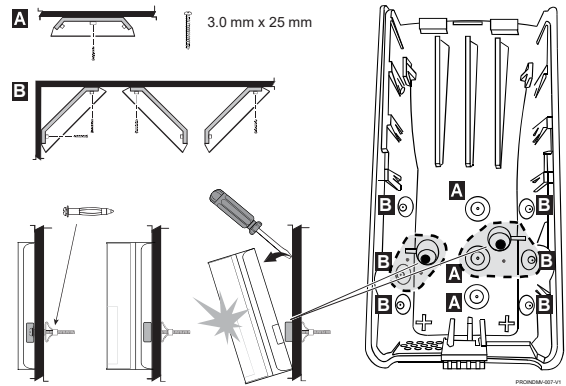
After enrolling, verify adequate signal strength by conducting a sensor test with the device installed in its intended mounting location (see the controller's instructions). Adjust the device mounting location and orientation as necessary to achieve maximum signal strength.

The device can be mounted on the wall or in corners:

- **[A]** = Wall Mounting Holes
- **[B]** = Corner Mounting Holes

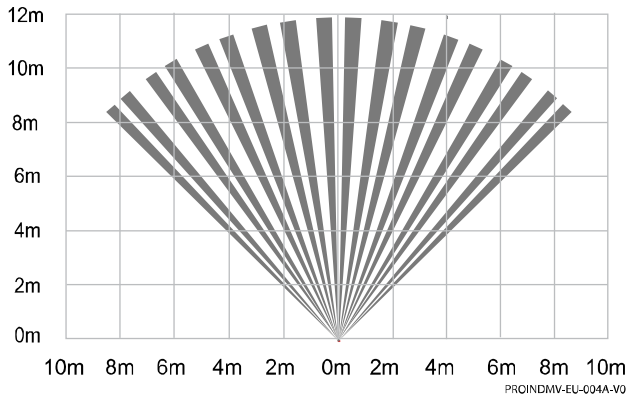
The rear tamper plate **MUST** be mounted to a stud, solid wood, or with a robust wall anchor.

**Note:** Do not aim the detector at windows, especially those that are in direct sunlight, or at heat sources (fireplaces, radiators, and heating vents, etc.).

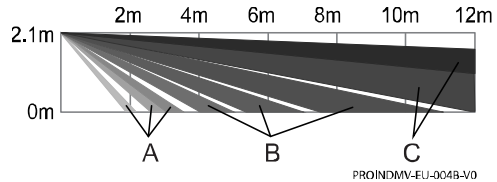


## DETECTION PATTERNS

### Top View



### Side View



### Zones

- |          |           |              |
|----------|-----------|--------------|
| <b>A</b> | <b>18</b> | Lower        |
| <b>B</b> | <b>46</b> | Intermediate |
| <b>C</b> | <b>36</b> | Long         |

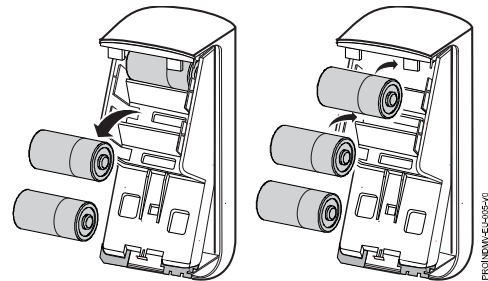
## BATTERY REPLACEMENT

The detector is powered by three Lithium batteries that provide up to 4 years of battery life.

**Note:** See the **Specifications** section for recommended replacement batteries. Do not mix old and new batteries, battery types, or manufacturers.

### BATTERY CAUTION:

Risk of fire, explosion, and burns. Do not recharge, disassemble, heat above 55°C, or incinerate. Dispose of used batteries properly. Keep away from children.



## ENROLLING

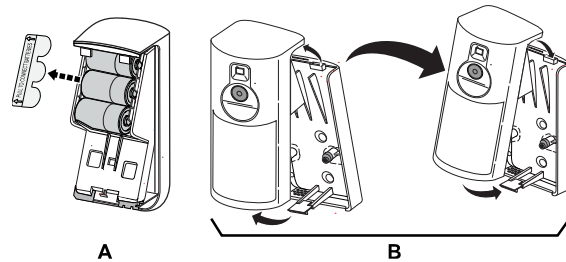
You must enroll the detector in the Control Panel. Refer to the panel programming instruction for detailed procedures.

**Note:** Registration and Programming is conducted through the AlarmNet 360™ cloud-based management platform, using the Resideo Pro App.

1. Use the AlarmNet 360 programming tool to program the device.
2. When prompted, perform one of the following:
  - Pull the battery tab out **[A]**
  - If powered, open and close the cover again **[B]**.
3. The LED flashes rapidly at power up.

**Note:** After enrolling, verify adequate signal strength by conducting a sensor test with the device installed in its intended mounting location (see the controller's instructions). Adjust the device mounting location and orientation as necessary to achieve maximum signal strength.

**Note:** After enrolled in a system, the device cannot be used with another Control Panel until it is removed from the current panel. See the Control Panel instructions for details.



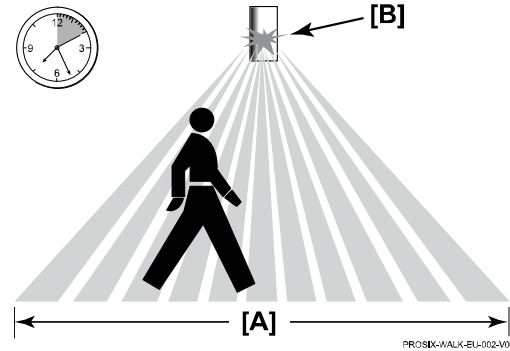
## WALK TEST

After enrolling, the sensor automatically enters a 10-minute Walk Test mode. With the device in its intended mounting location, adjust the device location and orientation as necessary.

1. Walk through the detection area [A] and observe the LED [B].
2. After 10 minutes, the sensor automatically exits the Test mode, disables the LED, and enters a normal operation mode.

To restart a 10-minute Test period, activate the Test mode with the Control Panel (see the panel instructions).

**Note:** System must be **disarmed** to enter Test Mode and can only be armed again after exiting the Walk Test mode.



## SPECIFICATIONS

Electrical		Radio Properties	
Battery	Three (3) 3V Lithium batteries	Wiselink® technology	
Battery Part Number	DURACELL DL123A; PANASONIC CR-123A	Radio type	Spread spectrum RF bidirectional
Nominal voltage	3 V	Operating frequency	868 MHz (EMEA)
Low battery threshold	2.7 V	Transmission security	AES algorithm encryption
Estimated battery life	Up to 4 years	Supervision	Radio, batteries
Current consumption	Standby (1h average) 85 mA/Max 350 mA	Radio antenna	Integrated
Video Properties		Detection Properties	
<b>Camera</b>		<b>Infrared detection specifications</b>	
Angle (HFOV)	0°	Technology	Passive-infrared
Sensor type	CMOS	Type	Dual element sensor
Spectral Resolution	Color	Lens	Fresnel
Night vision	Automatic White LED	Detection angle90°	90 - 180 seconds
Video distance	7m	Detection range	Up to 12m
Video format	H.264	Initialization time	90 seconds
Frame rate	10fps	Recovery time	90 - 180 seconds
Spatial resolution	QVGA (320 x 240) / VGA (640 x 480)	<b>Physical properties</b>	
Video File Size	Up to 230 kB	Dimensions	113 mm (H) x 50 mm (W) x 54 mm (D)
<b>Snapshot</b>		Weight	165 g (including 3 batteries)
Encoding	JPEG	Material	ABS 5VB
Spatial resolution	QVGA (320x240) / VGA (640x480)	Tamper	Wall and cover tamper
File size	Up to 230 kB	<b>Installation / Mounting</b>	
Environmental		Mounting height	2.3 m (optimal range height)
Operating temperature	-10° ~ +55° C	Application Mounting	On Wall (Flat Wall or in Corner)
Max relative humidity	95%, without condensing		
Physical Protection	IP30 and IK04		



The product should not be disposed of with other household waste. Check for the nearest authorized collection centers or authorized recyclers. The correct disposal of end-of-life equipment will help prevent potential negative consequences for the environment and human health.

**Product must be tested at least once each year**

Any attempt to reverse-engineer this device by decoding proprietary protocols, de-compiling firmware, or any similar actions is strictly prohibited.

REFER TO THE INSTALLATION INSTRUCTIONS FOR THE CONTROL PANEL WITH WHICH THIS DEVICE IS USED, FOR DETAILS REGARDING LIMITATIONS OF THE ENTIRE ALARM SYSTEM.

**SUPPORT & WARRANTY INFORMATION**

For the latest documentation, warranty, and support, please go to: [www.resideo.com](http://www.resideo.com)



Sécurité Communications SAS (SECOM)  
1198, Avenue du Docteur Maurice Donat  
06250 Mougins - FRANCE



Ademco 1 Ltd., 200 Berkshire Place  
Winnersh Triangle, Berkshire,  
RG41 5RD – UNITED KINGDOM

PROINDMV-EU



R800-26481A 10/21 Rev A

**resideo**

© 2021 Resideo Technologies, Inc.  
[www.resideo.com](http://www.resideo.com)