

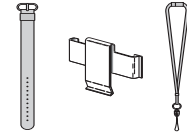
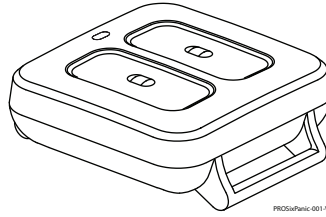
### Installation and Setup Guide

The PROSIXPANIC-EU is a bi-directional wireless panic device that is intended for use with Control Panels that support SiX™ series devices.

To activate this device, press and hold both buttons briefly until the LED flashes. To clear the alarm at the panel, enter a user code. To clear memory of alarm, select Disarm and enter a user code.

#### LED Indications:

- Green flashing: Unit is transmitting.
- Red flashing: Low battery (lights when button is pressed)



**NOTE:** The device can be used with a belt clip, lanyard, or wristband.

### ENROLL AND PROGRAM

You must enroll the device in the PROHP-EU Control Panel. Refer to the Control Panel programming instruction for detailed procedures.

Set the panel in Programming Mode, and when prompted:

1. Press and hold both buttons briefly until the LED flashes green to activate the enrollment process.
2. The LED continues to flash during enrollment (up to about 20 seconds). The device sends data, and the panel registers the device.

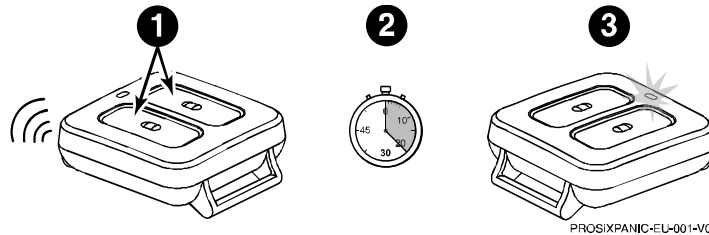
**NOTE:** Enrollment time varies depending on the signal strength between the device and the Control Panel.

3. When completed, the LED lights solid green for 3 seconds to confirm enrollment.

If enrollment is not confirmed, press and hold both buttons briefly again to restart the enrollment process.

**IMPORTANT:** After enrolled in a system, the device cannot be used with another Control Panel until it is removed from the current panel. When removed from a system, the sensor will revert to factory default settings.

**After Enrolling:** Verify an adequate signal strength by conducting a sensor test (see the Control Panel instructions).

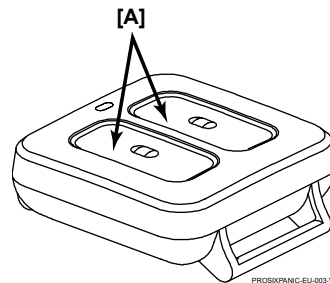


### 24-HOUR ENROLLMENT DELETION AND DEFAULT

If the device is enrolled in a Control Panel different than the intended panel, and you are unable to delete it from the unintended panel, reset the device to factory default setting:

- Press and hold both buttons **[A]** for 15 seconds. When successful, the LED comes back on flashing.
- The device self-deletes from the panel it was enrolled in.

This procedure is available for 24 hours after enrollment with a panel and the device remains powered (battery installed)



## BATTERY REPLACEMENT

When the battery is low, the LED flashes red during transmission.

To replace the battery:

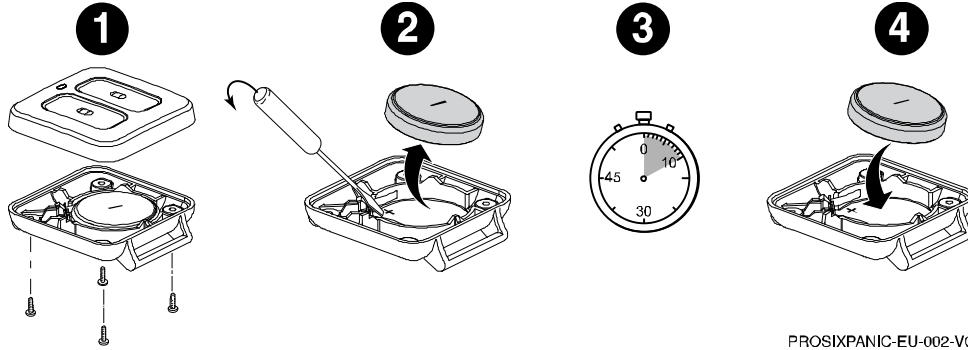
1. Remove the screws from the back housing and using a screwdriver, gently separate the front and back housings.
2. Using a screwdriver, carefully remove the battery.
3. Wait 10 seconds or press a button for 2 seconds to ensure full power discharge.
4. Insert a new 3V Coin Cell battery as shown.

**NOTE:** See **Specifications** for recommended replacement batteries.

5. Replace the front housing and secure the housings with the cover screws.

**BATTERY CAUTION:** Risk of fire, explosion and burns. Do not recharge, disassemble, heat above 55° C, or incinerate. Dispose of used batteries properly. Keep away from children.

**NOTE:** Constant exposure to high or low temperature or high humidity may reduce the battery life.



PROSIXPANIC-EU-002-V0

## SPECIFICATIONS

### Battery:

- 1 x 3V Coin Cell
- Panasonic CR2450

**Operating Temp:** -10° ~ +55° C

**Relative Humidity:** 95% max. non-condensing

**Dimensions / Weight:** 47 mm (L) x 40 mm (W) x 15 mm (H) / 25 g



The product should not be disposed of with other household waste. Check for the nearest authorized collection centers or authorized recyclers. The correct disposal of end-of-life equipment will help prevent potential negative consequences for the environment and human health.

**Product must be tested at least once each year**

Any attempt to reverse-engineer this device by decoding proprietary protocols, de-compiling firmware, or any similar actions is strictly prohibited

### IMPORTANT SECURITY NOTICE

Please inform the User about the security importance of their wireless sensor, and what to do if it is lost.

They should immediately notify the Dealer/Installer of a lost or stolen sensor. The Dealer/Installer will then remove the sensor programming from the security system

REFER TO THE INSTALLATION INSTRUCTIONS FOR THE CONTROL PANEL WITH WHICH THIS DEVICE IS USED, FOR DETAILS REGARDING LIMITATIONS OF THE ENTIRE ALARM SYSTEM.

### SUPPORT & WARRANTY INFORMATION

For the latest documentation, warranty, and support, please go to: [www.resideo.com](http://www.resideo.com)



Sécurité Communications SAS (SECOM)  
1198, Avenue du Docteur Maurice Donat  
06250 Mougins - FRANCE



Ademco 1 Ltd., 200 Berkshire Place  
Winnersh Triangle, Berkshire,  
RG41 5RD – UNITED KINGDOM

PROSIXPANIC-EU



R800-26492A 10/21 Rev A

**resideo**

© 2021 Resideo Technologies, Inc.  
[www.resideo.com](http://www.resideo.com)