

Honeywell Home



Honeywell Home **Product Range**



Honeywell Home

Resideo pioneers the next wave of connected home technology to help you feel comfortable, safe, and secure, relaxing as if you were home even when you're not.

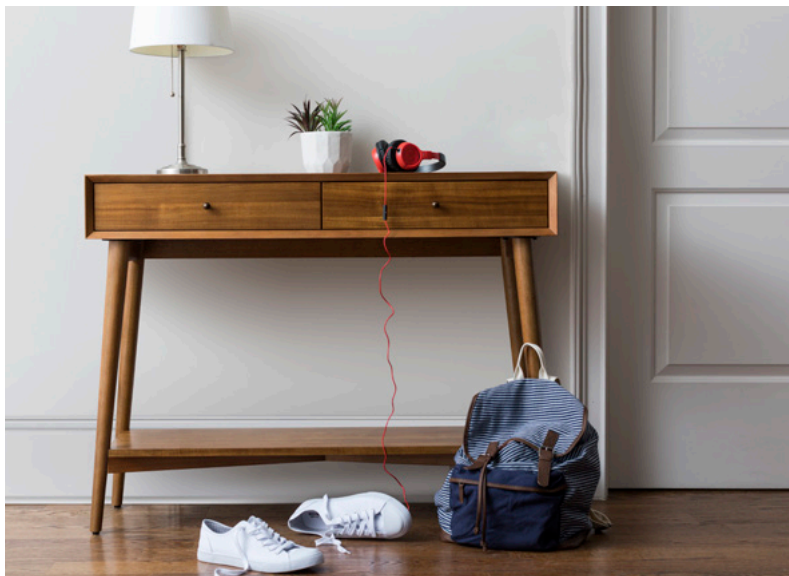
In 2018 the company that makes these products was separated from the Honeywell corporation and is now a stand-alone NYSE traded company called Resideo.

Through our Honeywell Home products, we hold approximately 3,000 worldwide active and pending patents - and we intend to continue to find inspiration in the everyday moments to deliver intuitive technology that's reliable, desirable and crafted for your comfort.

With products in 150 million homes and 5.6 million connected customers, The Honeywell Home brand is more than a name on our innovations; it's part of our promise to keep the heritage of home at the heart of everything we do.



Honeywell Home doorbells represent the next generation in technology for the home - doorbells that not only adapt to suit your home, but have the capability to grow with your family as needs and habits evolve.

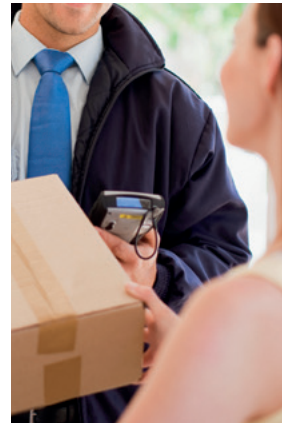


For decades **Honeywell Home Heating Controls** have been recognised as the market leading brand of timers and thermostats, zone valves and TRVs in the UK market.



Doorbells

Honeywell Home's revolutionary new range of wireless doorbells for the home. Providing unique features to suit any home and lifestyle.



Never miss a visitor or delivery

- Portable doorbells can be taken with you anywhere around the home and garden.
- Wireless range of up to 200m means your doorbell will always work, wherever you place it.
- Link two doorbells together to boost the wireless range from 200m up to 400m.



Disturbance free

- Sleep mode mutes the sound for 3, 6, 9 or 12 hours, so you can relax, free of any disturbance
- Use mute mode to silence the doorbell until you turn the sound back on again.
- Easily adjust the volume to suit your family or mood.



Visual alerts

- The unique halo light and LED strobe features provide visual alerts – great in loud environments, when sleep or mute mode is activated and for the hearing-impaired.
- Customisable halo light with 7 colours to choose from.
- Nightlight mode guides your way in the dark with a soft comforting glow.



Reliability and quality

- Honeywell Home ActivLink™, using the 868MHz frequency, is our innovative wireless protocol which delivers 20% wider range, 20% improved battery life and a consistent connection with no interference. Making these doorbells our most efficient and reliable yet.
- Up to 5 years battery life, for peace of mind.
- 2 year product guarantee.



Easy to install and use

- Pre-linked and ready to use straight from the box.
- Easy screw-free installation.
- Easy open battery compartment.



Doorbells

Convenient, simple and easy to install, these pre-linked Honeywell Home doorbell kits provide the perfect doorbell solution for any type of home.



Portable doorbells

Portable doorbells have an outstanding range, meaning you can take them with you around the home and garden so you'll never miss a visitor or delivery again.



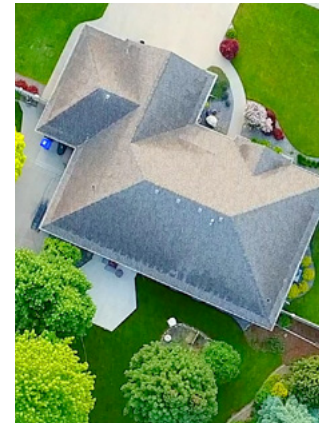
Plug-in doorbells

Plug-in doorbells are always powered and ready to go. Our range features such benefits as our innovative nightlight mode, as well as USB charging, so you're able to charge smart devices whilst the doorbell is plugged-in.



Home and garden kits

Never miss a visitor again with this flexible doorbell kit. Place the plug-in doorbell inside your home and take the portable doorbell with you into the garden, so you'll always know when someone's at the door.



Front and back door kits

Front and back door kits provide a simple, hassle-free solution for your home, providing two pushes that are pre-linked to one doorbell so you'll never miss a visitor again.



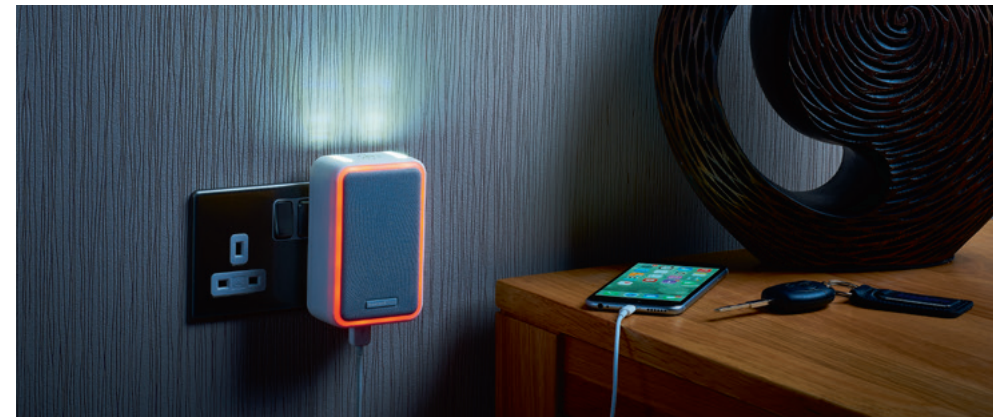
Doorbells

Honeywell Home doorbells represent the next generation in technology for the home.

- Never miss a visitor - your customers can take the portable doorbells anywhere around the home and garden.
- Disturbance free - with adjustable volume and innovative sleep/mute mode, which mutes the doorbell indefinitely, or for a prescribed period of 3, 6, 9 or 12 hours, your customer can relax free from disturbances during movie nights or nap time.
- Visual alerts - the halo light and LED strobe features are discreet but effective visual alerts which complement the chosen melody in loud environments, or help with providing an alert when the doorbell can't be heard
- Between 150 and 200m wireless range*
- A maximum volume of 90dB gives an audible range of up to 100m*



DESCRIPTION	PRODUCT CODE
WF CHIME KIT 150M 4TUNES 80DB WHITE	DC311N
WF CHIME KIT 150M 4TUNES 80DB WHITE PLUG	DC311NBS
WF CHIME KIT 150M 6TUNES 84DB LED WHITE	DC313NBS
FRONT & BACK DOOR KIT (1 PORTABLE, 2 PUSHES)	DC313NFB
HOME & GARDEN KIT (1 PORTABLE & 1 PLUG-IN)	DC313NHGBS
WF CHIME KIT 150M 6TUNES 84DB LED WHITE	DC315N
WF CHIME KIT 150M 6TUNES 84DB HALO WHITE	DC315NBS
WF CHIME KIT 150M 6TUNES 84DB HALO WHITE	DC515N
WF CHIME KIT 150M 6TUNES 84DB HALO WHITE	DC515NBS
WF CHIME KIT 200M 8TUNES 90DB LED WHITE	DC915N
WF CHIME KIT 200M 8TUNES 90DB LED SILVER	DC915NG
WF CHIME CONVERTER KIT (1 PORTABLE, 1 WIRED TO WIRELESS CONVERTER)	DC915SCV
WF CHIME KIT 200M 8+ TUNES LED SILVER	DC917NG
WF PUSH PORTRAIT WHITE	DCP311
WF ROUND PUSH WHITE	DCP711
WIRED TO WIRELESS CONVERTER WHITE	DCP917S
WIRED CHIME 4 TUNES 80DB WHITE	DW311S
WIRED CHIME 6TUNES 84DB LED WHITE	DW313S
WIRED CHIME 6TUNES 84DB HALO WHITE	DW315S
WIRED / WF CHIME 8TUNES 90DB HALO WHITE	DW915S



Series 3



Series 5



Series 9

*Range depends on model.



Key Doorbell Features

Each Honeywell home doorbell has a number of features that ensures it will suit any household no matter the size or requirement. From mute/sleep mode, plug-in & portable options, to a variety of kits, there's something to suit everyone.

MODEL / COLOUR	PORTABILITY	WIRELESS / WIRED	SOUND				VISUAL ALERTS	POWER	CONTENTS																		
SERIES 9																											
Model	Colour	Portable	Plug-In	Wireless	Wired	Wireless range (m)	Range extender	Audible range (m)	Audible volume (dB)	Melodies	Melody customisation	Volume control	Sleep/Mute mode	8 Colour Halo Light	LED Strobe	Nightlight	Battery life (years)	Mains powered via micro USB	USB charging for mobile devices	Wireless push button	Portable doorbell	Plug-In doorbell	Wired or wired/wireless doorbell	Wireless motion sensor (IP54)	Wireless door/window sensor	Wired to wireless converter	
DC917NG	GREY	•		•		200	•	100	90	8	•	•	•	•	•		5	•		1	1						
DC915S	WHITE	•		•		200	•	100	90	8		•	•	•	•		5	•		1	1						
DC915N	WHITE	•		•		200	•	100	90	8		•	•	•	•		5	•		1	1						
DC915NG	GREY	•		•		200	•	100	90	8		•	•	•	•		5	•		1	1						
DC915SCV	WHITE	•		•	•	200	•	100	90	8		•	•	•	•		5	•		1	1					1	
DW915S	WHITE	•		•	•	200	•	100	90	8		•	•	•	•		5	•					1				
SERIES 5																											
DC515N	WHITE	•		•		150		80	84	6		•	•	•	•		2			1	1						
DC515NBS	WHITE		•	•		150		80	84	6		•	•	•	•	•				1		1					
SERIES 3																											
DC315N	WHITE	•		•		150		80	84	6		•	•	•	•		2			1	1						
DC315NBS	WHITE		•	•		150		80	84	6		•	•	•	•	•		•		1		1					
DC313NBS	WHITE		•	•		150		80	84	6		•			•					1		1					
DC311N	WHITE	•		•		150		60	80	4							2			1	1						
DC311NBS	WHITE		•	•		150		60	80	4										1		1					
DC313NHGBS	WHITE	•	•	•		150		80	84	6		•			•		2			1	1	1					
DC313NFB	WHITE	•		•		150		80	84	6		•			•		2			2	1						
DW315S	WHITE				•			80	84	6		•	•	•	•		2								1		
DW313S	WHITE				•			80	84	6		•			•		2								1		
DW311S	WHITE				•			60	80	4							2								1		

Classic Doorbells

A wide variety of fixed wall mounted doorbells, security bells, pushes and transformers to provide a more classic offering for your customers.



DESCRIPTION	PRODUCT CODE
MASTERBELL 12V AC - GREY	56-012
MASTERBELL 24V AC - GREY	56-024
MASTERBELL 230V AC - GREY	56-230
MASTERBELL 230V AC - RED	56-230R
CONDUIT BOX	56-66
BIGBELL 230V AC 50HZ	59-230
MASTERBELL SP 12V DC	66-12SP
MASTERBELL GREY 24V DC GREY	66-24SP
MASTERBELL RED 24V DC RED	6624SPR
GALA CHIME	D103
DOOR CONTACTS	D1053
FACET CHIME	D107
SURF CHIME	D113
DING DONG CHIME	D117
INDEX PUSH-UNLIT	D1225
INDEX PUSH LIT	D1226
FESTIVAL CHIME	D126
ATLANTA WIRED CHIME	D142
MINIBUZZER	D182
BIG BEN CHIME	D230
FESTIVAL CHIME W/TRANSF	D3126
BIG BEN CHIME W/TRANSF	D3230
LIGHTSPOT PUSH - BLACK	D534
LIGHTSPOT PUSH - WHITE (RETAIL PACKAGED)	D534WE

DESCRIPTION	PRODUCT CODE
GEM PUSH CHROME/BLACK	D611
LUNA PUSH CHROME	D630
REPLACEMENT PUSH BUTTON NON ILLUMINATED	D642
PEAR PUSH	D647
PUSHLITE BLACK WITH WHITE PUSH	D723
PUSHLITE WHITE WITH WHITE PUSH	D723W
TRANSFORMER 8V / 0.5A	D743
TRANSFORMER 8V / 1A	D753
TRANSFORMER 12V / 1A	D765
TRANSFORMER 8V / 0.5A	D770
TRANSFORMER 8V / 1A	D780
TRANSFORMER 8V / 1A SWITCHED	D780S
UNDERDOME BELL	D792
INTRUDER BELL BUTTON PUSH	D814
DIMEX PUSH BLACK	D824
SEATTLE WIRED CHIME 25 TUNE	D844
OAKLAND WIRED CHIME 2 TUNE	D846
BELL IN ONE	D902
TRANSFORMER 12V 1.5A DIN/SURFACE	E3538N
TRANSFORMER 12V 2.0A	E3539N
TRANSFORMER 8V 1.5A DIN/SURFACE	E3549
TRANSFORMER 8V 2A DIN/SURFACE	E3554N
TRANSFORMER 8V 2A DIN/SURFACE	E3554SN



Spectra & Spectra+ PIR Detectors

The wired and wirefree Spectra+ range provides an easy to install detection solution.

The range of PIR movement detectors consists of high specification models that will turn new and existing lighting into security lighting for safety and convenience. The PIR's can control a wide range of lighting from 600W fluorescent, 2300W tungsten/halogen to 20x20W compact fluorescent lamps and LEDs.

- Up to 15m detection range
- Wirefree operation on the 868MHz technology
- 1400, 2000 and 3600 detection areas
- Wired versions supplied with remote control to switch between ON/OFF and AUTO mode
- Adjustable sensitivity level (on specific models)
- Adjustable lux level to switch on the lighting at various brightness levels upon movement detection.
- "Walk test" allows easy setting and adjustment during daylight
- Adjustable 'time on' period – up to 20 minutes
- Pan +/- 45°
- Tilt - down 30°
- Incorporated with manual override mode to switch ON/OFF lighting using external wall switch
- IP55 rated
- 16A relay rating
- Fixings included
- Battery for remote control included

DESCRIPTION	PRODUCT CODE
SPECTRA LITE BULKHEAD WITH PIR	L110NWHI
SPECTRA 140DEG PIR BLACK	L210NBLK
SPECTRA 140DEG PIR WHITE	L210NWHI
SPECTRA 200DEG PIR BLACK	L220NBLK
SPECTRA 200DEG PIR WHITE	L220NWHI
SPECTRA 360DEG PIR WHITE	L230WHI
SPECTRA+ WIRED 200DEG PIR WHITE	L320WHI
SPECTRA+ WIRED 360DEG PIR BLACK	L330BLK
SPECTRA+ WIRED 360DEG PIR WHITE	L330WHI
SPECTRA/LIBRA+ BLACK WIREFREE PIR	L430NBLK
SPECTRA/LIBRA+ WHITE WIREFREE PIR	L430NWHI
WF EXTERNAL MOTION SENSOR 140DEG WHITE	L430S
SPECTRA MINIFLOOD 150W BLACK	L510NBLK
SPECTRA SUPERFLOOD 500W BLACK	L540NBLK
10 WAY JUNCTION BOX	42002116-002



Timers and Programmers



Wired Time Control



ST9000 timers and programmers

Fit on most common industry-standard back-plates, enabling them to replace most equivalent time controllers on the market.

- Large easy to read backlit display
- Line of text display, providing text feedback
- Boost buttons for 1, 2 or 3 hours of extra heating or hot water
- Fits on industry standard back plate
- Up to 3 on/off times per day
- Automatic summer/winter 1 hour time change
- Factory set clock and date
- Temporary or permanent override facilities

DESCRIPTION	PRODUCT CODE
7 DAY SINGLE CHANNEL TIMER	ST9100C1006
7 DAY 2 CHANNEL PROGRAMMER	ST9400C1000

Wireless Enabled Time & Temperature Control



Sundial RF² pack

Are boxed sets of controls, which combine a wireless enabled timer, wireless room thermostat(s) and a wireless cylinder thermostat (if required). The timer has a wireless receiver built in. This means that, simply by replacing an old timer, a thermostat is enabled in a system, without having to run any new wiring.

- A two-way wireless receiver built into the timer avoiding the need to wire extra receivers into the heating system
- Products wirelessly pre-bound in the box
- Fits on industry standard back plate
- A pack to cover the majority of systems
- Just fit the timer and everything else is wirelessly enabled on the system

APPLICATION	SUNDIAL RF ² PACK
WIRELESS ENABLED TIMER AND WIRELESS THERMOSTAT PACK 1	Y9120H2009
WIRELESS ENABLED PROGRAMMER AND WIRELESS THERMOSTAT PACK 2	Y9420H1008
WIRELESS ENABLED PROGRAMMER, WIRELESS THERMOSTAT & WIRELESS CYLINDER THERMOSTAT PACK 3	Y9420S2005
WIRELESS ENABLED TIMER AND WIRELESS THERMOSTAT PACK 4	Y9120W1000
WIRELESS ENABLED 2 ZONE PROGRAMMER AND TWO WIRELESS THERMOSTAT PACK 5	Y9520Z1007

Room Thermostat



Mains Voltage



T6360 Mechanical wired room thermostat

- Three wire connection
- 10 to 30°C set point range
- Multiple options available including 16amp
- Frost stat version also available

Voltage Free



DT90 wired thermostat

- Two wire connection
- Large backlit display
- Displays room temperature
- Eco button for energy saving set-back or boosts
- Frost protection mode

Wireless



DT92 wireless thermostat

- Two wire connection
- Large backlit display
- Displays room temperature
- Eco button for energy saving set-back or boosts
- Pre-bound with two-way wireless receiver
- Signal strength test
- Table stand
- Frost protection mode

Upgrade to Smart



Y87RF2024: A simple twist-to-operate, battery operated, wireless thermostat

- Two wire connection
- Large backlit display
- Displays room temperature
- Simple twist to operate
- Upgrade to smart by adding the RFG100 mobile access kit
- Honeywell Home app enables time and temperature settings

DESCRIPTION	PRODUCT CODE
WIRED THERMOSTAT 5AMP	T6360B1028
WIRED THERMOSTAT WITH INDICATOR LIGHT	T6360B1036
WIRED THERMOSTAT 16AMP	T4360B1015
DT90 ECO NON-PROG WIRED DIGITAL STAT	DT90E1012
DT92 ECO NON-PROG WIRELESS DIGITAL STAT	DT92E1000
WIRELESS THERMOSTAT	Y87RF2024
MOBILE ACCESS KIT FOR Y87RF2024	RFG100
FROST THERMOSTAT 3AMP	T4360A1009

Programmable Thermostats



For Budget.



T3 programmable thermostat

- 4 time schedules per day
- Wired and wireless models
- With built-in service reminder
- Easy to install & programme

For Comfort.



T4 programmable thermostat

- 6 time schedules per day
- Wired and wireless models
- OpenTherm compatible models
- Easy to install & programme

For Style.



T6 smart programmable thermostat

- Smart & location based control
- Hot water control if required
- Works with all the major smart home devices
- Table mount and wall mounted models available
- OpenTherm compatible

DESCRIPTION	PRODUCT CODE
T3 WIRED PROGRAMMABLE THERMOSTAT	T3H110A0066
T3R WIRELESS PROGRAMMABLE THERMOSTAT	Y3H710RF0053
T4 WIRED PROGRAMMABLE THERMOSTAT	T3H310A0045
T4R WIRELESS PROGRAMMABLE THERMOSTAT	T4H110A1021
T6 WIRED SMART THERMOSTAT	Y6H910WF1011
T6R WIRELESS SMART THERMOSTAT	Y6H910RW4022
T6R-HW WIRELESS SMART THERMOSTAT INC HOT WATER	Y6H920RW4026



evohome Smart Multi-Zone System



You wouldn't control all your lights from one switch... why would you do it for your heating?

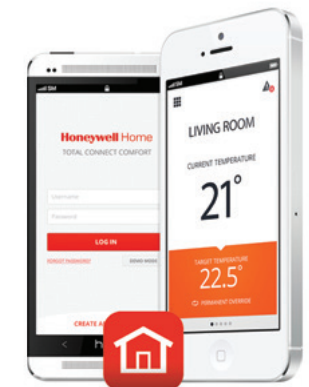
- The evohome multi-zoning system allows the easy installation of up to 12 individual heating zones
- The system also controls hot water time and temperature
- Underfloor heating areas can be controlled via the evohome system allowing central control of both radiators and underfloor heating
- Combi-boiler evohome applications can be designed without zone valves
- Thousands of properties (small and large) now have sophisticated zone control thanks to evohome
- The **evohome Essentials Pack** (ATP926G3001) brings you the sophistication of our evohome multizoning Thermostat with the simplicity of our HR91 radiator controllers. Contents include: 1 x evohome controller and table stand, 1 x wireless boiler relay and 6 x HR91 radiator controllers



DESCRIPTION	PRODUCT CODE
EVOHOME CONNECTED THERMOSTAT	ATP921R3100
EVOHOME HOT WATER KIT	ATF500DHW
EVOHOME RADIATOR CONTROLLERS (X4) WITH SCREEN	HR924UK
EVOHOME RADIATOR CONTROLLER WITH SCREEN	HR92UK
EVOHOME UNDERFLOOR HEATING CONTROLLER	HCC80R
EVOHOME ESSENTIALS PACK (CONNECTED THERMOSTAT, RADIATOR CONTROLLERS X6)	ATP926G3001



evohome essentials pack



Flow Control

Motorised Valves

Our range of two and three port valves are the premier models used in the domestic central heating market.

- Tried and tested quality
- Removable head and replaceable motor
- Durable rotating ball provides tight valve shut off
- Reliable 'Synchron' motor
- Quiet operation and minimal power consumption
- Manual lever for filling and draining the system

DESCRIPTION	PRODUCT CODE
2 PORT ZONE VALVE - 22 MM	V4043H1056/U
MID-POSITION VALVE - 22 MM	V4073A1039/U



V4043 2 port zone valve

V4073A 3 port mid position zone valve & V4044C 3 port diverter valve

DU144/5 Automatic Bypass

The automatic bypass valve controls the flow of water through a bypass circuit which is installed between flow and return pipework.

- Reduces system noise and maintains an even system pressure
- Ensures constant flow through boiler
- Lockable set pressure prevents inadvertent adjustment

DESCRIPTION	PRODUCT CODE
22MM STRAIGHT BYPASS VALVE	DU144A1001
22MM ANGLED BYPASS VALVE	DU145-3/4B



Automatic bypass valves

Thermostatic Radiator Valves

Traditional TRV Set

Combining reliability with energy efficiency, the Honeywell Home TRV with chrome body and matching lockshield (VTL120) is our most popular traditional thermostat. The TRV has integral balancing adjustment and an energy saving button to help the customer stay in control.

- A-Rated energy saving performance
- Bi-directional flow valve
- Energy saving button

DESCRIPTION	PRODUCT CODE
TRADITIONAL TRV 15MM ANG	VT117-15A
TRADITIONAL TRV+LS 15MM ANG	VTL120-15A

Designer TRV Set

The VT200 designer TRV is top of its class for performance, quality and reliability. Its classic look and unobtrusive design make it suitable for any heating installation

- A-Rated energy saving performance
- Bi-directional flow valve
- Integral balancing
- Stylish design

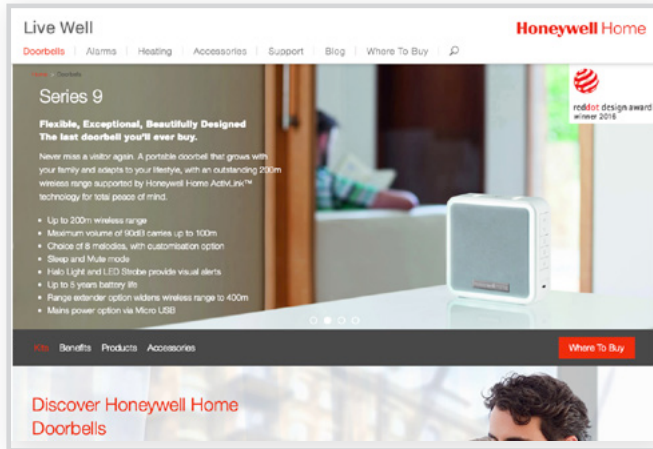
DESCRIPTION	PRODUCT CODE
DESIGNER TRV 15MM ANG	VT200-15A
DESIGNER TRV+LS 15MM ANG	VTL200-15A





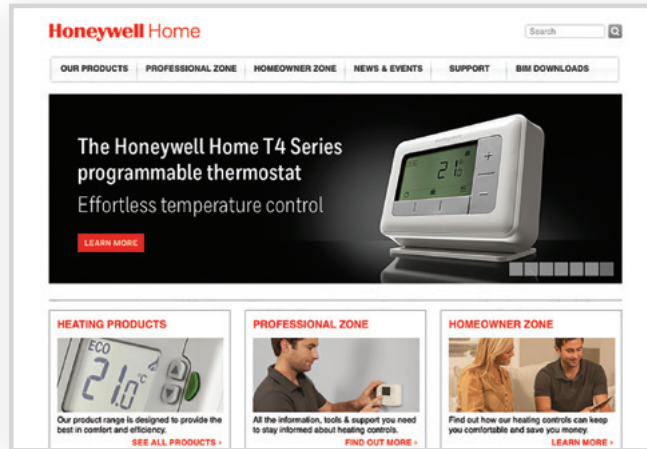
Our websites are designed to provide all the information you need to specify, install and use our brand leading range of heating controls, potable water products and doorbells.

For more information:



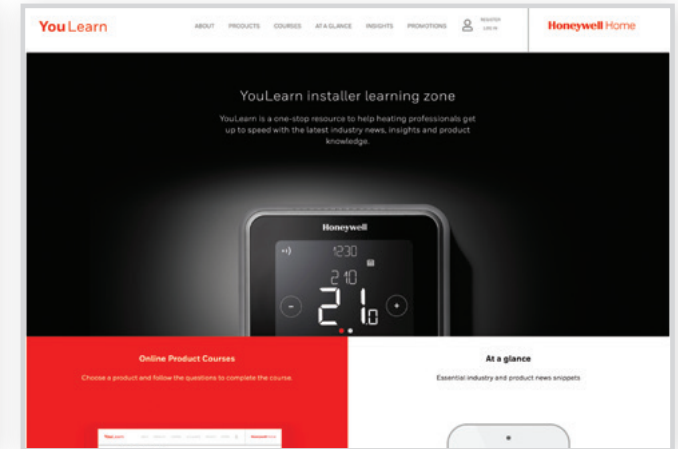
livewell.honeywellhome.com

On Honeywell Home doorbells



heatingcontrols.honeywellhome.com

On Honeywell Home range of heating controls



youlearn.honeywellhome.com

for insights into our range; the uses the products have and a library of interesting documentation and articles

Resideo Technologies, Inc.

200 Berkshire Place,
Winnersh, Berkshire,
RG41 5RD

UKRES D0520

resideo

© 2020 Resideo Technologies, Inc.

This product manufactured by Resideo and it's affiliates.
The Honeywell Home trademark is used under license
from Honeywell International Inc. All rights reserved.