



# resideo

## ProSeries.

The ultimate end-to-end security and life safety platform.



# Introducing ProSeries.

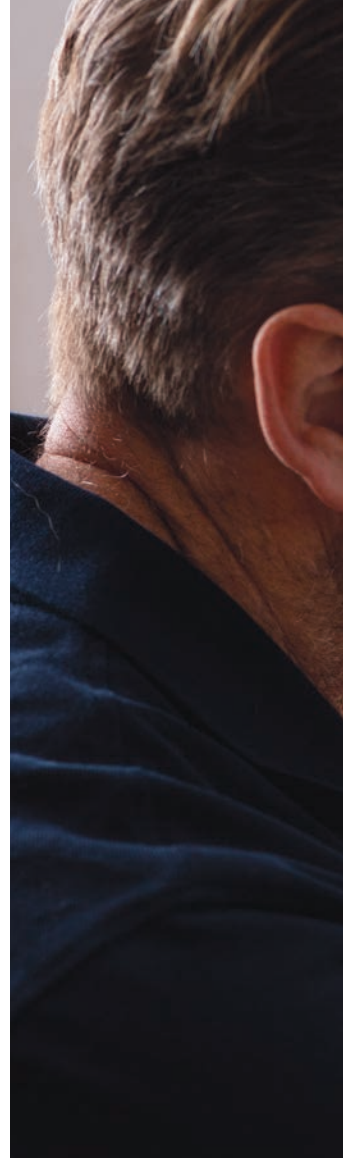
A security platform  
for professionals.

## The comprehensive security and life safety platform trusted by homeowners and small businesses.

Resideo is a leading provider of home security and life safety solutions and we've got more than a century of experience behind us, powering the next wave of connected home technology and trusted in over 150 million homes.

With ProSeries, customers choose our security and life safety products because they provide flexible control and peace of mind in an uncertain world.

Professional installers choose ProSeries for an outstanding install experience from a modular platform, built to support you every step of the way.



## One platform. Connected to the core.

At its core, life safety products connect to advanced smart home products and technology, working together to provide peace of mind for your customers and a product you can rely on.





## Save time and money.

With remote maintenance and over-the-air upgrades to panels and sensors.

### Why ProSeries?



#### Security that can grow.

ProSeries is totally scalable. A modular design means you can easily return to install additional products as customers naturally expand their existing security.



#### A future-proof solution.

With regular add-ons and hassle-free over-the-air updates to panels and sensors, ProSeries makes it easy for you to install now, and easy to upgrade for your customers at any time.



#### Increase your customer base.

Because ProSeries works for businesses and homes, you can reach more customers and win more business.

# ProSeries.

## Platform features and benefits.



### Intuitive security.

ProSeries offers a host of features and benefits for professionally or self monitored security day and night. It's responsive, with fast alerts and hands-free disarming for an enhanced user experience.



### Life safety.

ProSeries smart sensors detect safety risks from smoke and CO, and can even alert emergency services.



### Smart thinking.

ProSeries products offer a smart, connected home with the single, easy-to-use Total Connect 2.0 app, which controls lighting, locks, thermostats and more.

Leading  
the way.

Seamless. Scalable.  
A platform packed  
with features.

**Reduce training time**  
with our intuitive  
user interface.

---

Current, 5-day and  
**severe weather alerts.**

---

**Reduce customer service  
calls** with our remote tools  
for end-user support  
services, system settings  
and firmware updates.

---







**Reduce false alarms** with our easy-to-read full colour display with touchscreen. (PROAIOPLUS-EU Panel).

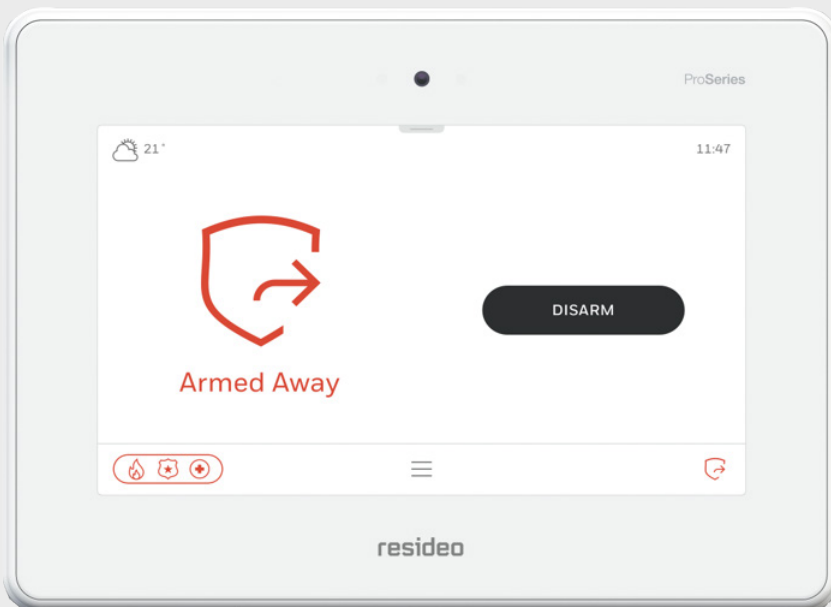
**Built-in camera** captures disarm photos to reduce false alarms (PROAIOPLUS-EU Panel).

**Reduce installation labour and time** with sensor batteries pre-installed.

**Fewer engineer call outs** with end-user replaceable parts such as batteries.

**Bluetooth disarming**  
Ease of use for customers.

**No holes to drill** when you use the desk mount.



**The same emergency icons** your customers have depended on for years across all platforms.

**Built-in speaker & microphone** for voice announcements (PROAIOPLUS-EU Panel).

**Reduce customer call outs** with troubleshooting videos.



# ProSeries.

## Software and Services.

**ProSeries is not just hardware, it is enhanced by a dedicated installer platform, apps and supported services, offering the most comprehensive security solution.**

### **AlarmNet 360™ platform for installers.**

This cloud-based business management platform helps to improve your business operations, increase efficiency and productivity while delivering valuable insights on accounts, helping to you to drive growth and lower lifecycle costs.

The platform enables ProSeries panel and peripheral programming and access to the Total Connect 2.0 app. Installers have anytime, anywhere web and mobile control over programming, troubleshooting, account management and more all from the convenience of the cloud.

### **What AlarmNet 360™ can do for you**

---

**Account Creation**

- Saves installation time with intuitive wizard-based account creation workflow

---

**Remote Diagnostics**

- Eliminate engineer call outs with remote zone verification and diagnostics

---

**Programming Templates**

- Correct, consistent system installs
- Reduce programming errors and install time

---

**Checklists**

- Reduce call backs
- Improves installation confidence
- Streamlines install time

---

**Endpoint Configuration**

- All-in-one place configurability
- Error protection with separate assignment permissions
- Supports stringent security policies

---

**Insights**

- Active and comms failure status across entire install base
- Easily plan engineer call outs
- Target marketing and sales strategies

---

**Smart User Management**

- Assign system programming permissions to installers
- Give agents access to account management and diagnostics

---

**Firmware Management**

- Full flexibility and control on updates



## Security and innovation at every step.

AlarmNet 360™ sets you apart from the competition.

### Installation enabled by services.

Powered by Pro-IQ™, there are a range of additional services that complement a ProSeries installation for installers and end users, including:

#### Insights

Get valuable end user insights through system analytics, helping to reduce troubleshooting time with a quick view on problem areas, identifying new upsell opportunities.

#### Automation

Customers also enjoy greater flexibility to integrate their security system with other smart home devices which add unique value using a wide range of automation enablers:

- Smart Scenes allows end users to configure their own customised trigger-action combinations
- Amazon Alexa voice assistant support means seamless integration with existing smart home devices
- Integrate with Resideo's T-Series range of thermostats

- Automation Rules allows installers to configure bespoke trigger-action customisations for their customers (the end users)

#### Connectivity

Save on logistics by including SIM connectivity with your system order and reduce install time with built-in SIM on the LTE module.

#### Co-branding

Promote your business and increase brand awareness with fast access to customer contact details. Customers get up-to-date contact information whenever they need it.

#### Video storage

Reduce complexity – no need to engage third party vendors for video storage.

#### Notifications

Offer full remote peace of mind to your customers.

# ProSeries.

One partner. One system.  
A world of opportunity.

**ProSeries is an ever-growing ecosystem,  
built to keep pace with a continuously  
changing world.**

With such a broad range of modular security and life safety accessories, your customers can be confident they have a platform for the long-term, and you can be confident in driving repeat business.

To view the full ProSeries range and see the latest additions and updates, please visit [Resideo.com/ProSeriesEMEA](https://Resideo.com/ProSeriesEMEA) or speak to a distributor.



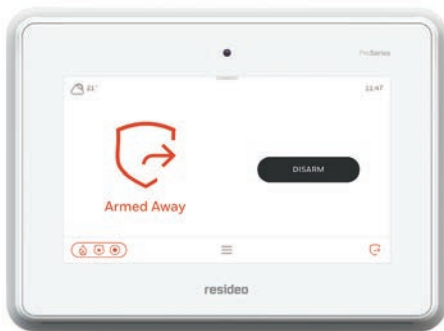


Control / security panels

## Touchscreen Security Panel

PROAIOPLUS-EU

- **Tamper Protected**  
Cover and wall tamper
- **7" LCD Touch screen with built-in camera**
- **127 intrusion devices, 4 partitions**  
250 Security and Life-Safety zones
- **96 users, 4000 Event Logs**
- **Dual Path Comms**  
Built-in WiFi module, optional LTE communicators



Control / security panels

## Security Panel

PROBOX-EU

- **Tamper Protected**  
Cover and wall tamper (if wall mounted)
- **Hidden panel**
- **127 intrusion devices, 4 partitions,**  
250 Security and Life Safety zones
- **96 users, 4000 Event Logs**
- **Dual Path Comms**  
Built-in Ethernet, with optional LTE communicators and WiFi modules
- **48 Hours Backup Battery**



MotionViewers

## Indoor MotionViewer®

PROINDMV-EU

- **Tamper Protected**  
Cover and wall tamper
- **Motion Activated Video**  
Colour video. Captures images in little or no light
- **Large Coverage Area**  
12 m x17 m detection pattern
- **Video Distance**  
7 m
- **Battery Life**  
Up to 4 years



MotionViewers

## Outdoor MotionViewer®

PROOUTMV-EU

- **Tamper Protected**  
Cover and wall tamper
- **Motion Activated Video**  
Colour video. Captures images in little or no light
- **Large Coverage Area**  
12 m x17 m detection pattern
- **Video Distance**  
7 m
- **Battery Life**  
Up to 4 years
- **Weatherproof**



## User interfaces

### LCD Keypad

PROSIXLCDKP-EU

- **Tamper Protected**  
Cover and wall tamper
- **LCD Display**
- **Arm buttons**  
Away, Stay and Night mode
- **Frequency**  
2.4GHz
- **Six Two-Way Wireless Technology**
- **RFID Tag Reader**



## Contacts

### Door / Window Sensors

PROSIXCT-EU

- **Tamper Protected**  
Cover and wall tamper
- **Magnetic Gap**  
25 mm gap for reed switch
- **Dimensions**  
19 mm (H), 74 mm (L), 29 mm (W)
- **Frequency**  
2.4 GHz
- **SiX Two-Way Wireless Technology**
- **Wired Input**



## Glassbreak and shock sensors

### Glassbreak Detector

PROSIXGB-EU

- **Tamper Protected**  
Cover and wall tamper
- **Frequency**  
2.4 GHz
- **Detection Pattern**  
7.6 m radius
- **Power Requirements**  
3 V CR123A battery (Qty 1)
- **Battery Life**  
Up to 4 years
- **"One-Go-All-Go" Feature**
- **SiX Two-Way Wireless Technology**



## Glassbreak and shock sensors

### Shock Sensor

PROSIXSHKCT-EU

- **Tamper Protected**  
Cover and wall tamper
- **Designed To Mount Directly on the Glass Surface**
- **Dimensions**  
25.5 mm (H), 79.5 mm (L), 41 mm (W)
- **Battery Life**  
Up to 4 years
- **SiX Two-Way Wireless Technology**



Sounders

## Indoor Siren

PROSIXSIREN-EU

- **Tamper Protected**  
Cover and wall tamper
- **Sound Pattern**  
360 degrees
- **Siren Output Level**  
95 dB at 1 m
- **Battery Life**  
Up to 5 years
- **"One-Go-All-Go" Feature**
- **SiX Two-Way Wireless Technology**
- **Light Indication**  
Arming, Disarming, Alarm

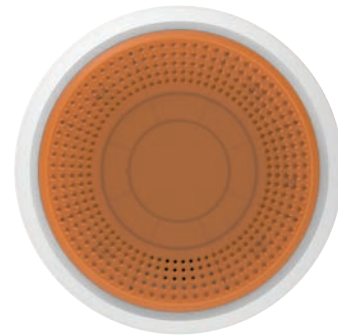


Sounders

## Outdoor Siren

PROSIXSIRENO-EU

- **Tamper Protected**  
Cover and wall tamper
- **Siren Output Level**  
95 dB at 1 m
- **Frequency**  
2.4 GHz
- **Battery Life**  
Up to 5 years
- **"One-Go-All-Go" Feature**
- **SiX Two-Way Wireless Technology**
- **Light Indication**  
Arming, Disarming, Alarm



Personal protection

## Panic Transmitter

PROSIXPANIC-EU

- **Power Requirements**  
3V 2032 coin cell battery (Qty 1)
- **Frequency**  
2.4 GHz
- **Encryption**  
128-bit AES
- **Dimensions**  
15 mm (H), 47 mm (L), 40 mm (W)
- **Water-Resistant Panic Alert Button**
- **Can Be Worn on Belt Clip, Lanyard and/or Wristband**
- **SiX Two-Way Wireless Technology**



Personal protection

## Medical Transmitter

PROSIXMED-EU

- **Power Requirements**  
3V 2032 coin cell battery (Qty 1)
- **Frequency**  
2.4 GHz
- **Encryption**  
128-bit AES
- **Dimensions**  
15 mm (H), 47 mm (L), 40 mm (W)
- **Water-Resistant Medical Alert Button**
- **Can Be Worn on Belt Clip, Lanyard and/or Wristband**
- **SiX Two-Way Wireless Technology**



Life safety

## Smoke Detector

PROSIXSMOKE-EU

- **Tamper Protected**  
Cover and wall tamper
- **Frequency**  
2.4 GHz
- **Power Requirements**  
3 V CR123A battery (Qty 2)
- **LED Indicators**
- **Battery Life**  
Up to 4 years
- **"One-Go-All-Go" Feature**
- **SiX Two-Way Wireless Technology**
- **Audible Signal**  
85 dBA at 3 m



Life safety

## Smoke Detector and Siren

PROSIXSMOKS-EU

- **Tamper Protected**  
Cover and wall tamper
- **Frequency**  
2.4 GHz
- **Power Requirements**  
3 V CR123A battery (Qty 2)
- **LED Indicators**
- **Battery Life**  
Up to 4 years
- **"One-Go-All-Go" Feature**
- **Audible Signal**  
85 dBA at 3 m
- **SiX Two-Way Wireless Technology**



Life safety

## Carbon Monoxide (CO) Detector

PROSIXCO-EU

- **Tamper Protected**  
Cover and wall tamper
- **LED Indicators**  
Yes
- **Audible Signal**  
85 dBA
- **Transmission Range**  
300 ft (92 m)
- **Frequency**  
2.4 GHz
- **Encryption**  
128-bit AES
- **"One-Go-All-Go" Feature**
- **SiX Two-Way Wireless Technology**



Environmental protection

## Flood Detector

PROSIXFLOOD-EU

- **Tamper Protected**  
Cover and wall tamper
- **Frequency**  
2.4 GHz
- **Power Requirements**  
3V CR123A battery (Qty 1)
- **Dimensions**  
25.5 mm (H), 79.5 mm (L),  
41 mm (W)
- **SiX Two-Way Wireless Technology**





### Motion sensors

## Motion Detector

PROSIXPIR-EU

- **Tamper Protected**  
Cover and wall tamper
- **Frequency**  
2.4 GHz
- **Detection Pattern**  
12 m x17 m
- **LED Indicators**
- **Dimensions**  
125 mm (H), 46 mm (L),  
52 mm (W)
- **SiX Two-Way Wireless  
Technology**



### Wireless accessories

## Wireless Repeater

PROSIXRPTR-EU

- **Tamper Protected**  
Cover and wall tamper
- **Wireless Repeater Extends the Range  
of SiX Wireless Devices**
- **Up to Two Units Can Be Used per  
ProSeries Alarm Panel**
- **Received Signal Strength Indicator  
(RSSI) Is Shown Using LEDs**
- **Range**  
up to 60 m



### Remote control fob / tags

## Two-Way Key

PROSIXFOB-EU

- **Frequency**  
2.4 GHz
- **Power Requirements**  
3 V 2032 coin cell battery (Qty 1)
- **Transmission Range**  
Up to 60 m
- **Battery Life**  
Up to 2 years



### Remote control fob / tags

## Coloured Tags

KTAG5

- **Kit of 5 Coloured Tags That Work  
With ProSeries LCD and LED Keypads  
To Arm and Disarm the System**
- **Wireless**

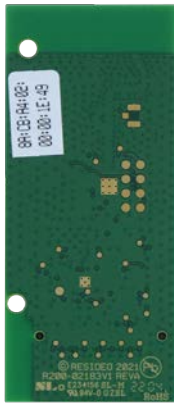


## Accessories

# Zigbee Home Automation Module

PROZB-EU

- **Allows ProSeries Control Panels to communicate with Zigbee devices (such as Zigbee lights).**  
This communications module is intended to act as the Zigbee controller, allowing compatible ProSeries Control Panels to manage the Zigbee devices with scenes.



## Accessories

# LTE Cellular Communications Modules

PROLTES-EU

- **Provides ProSeries Control Panels With a Cellular Communication Path**
- **Modules Are Sold With or Without SIM Card**  
Bring and use your own SIM
- **Increase Signal Coverage With Optional Extended Antenna**



A photograph of a family of three in a modern home. A man with a beard and grey hair is holding a young child with curly hair. A woman in a white bathrobe stands behind them. In the background, a red circular sensor is mounted on a blue wall. The scene is lit with warm, low-key lighting, and a staircase with gold railings is visible on the right.

## Proven life safety.

ProSeries takes care of premises and people. Smart sensors detect smoke and CO, triggering **One-Go-All-Go** alarms and alerting emergency services.

**resideo**

**Sécurité Communications SAS**

1198, Av, Dr Maurice Donat  
06250 MOUGINS, FRANCE  
Tel.: +33 (0)4 9294 29 50

RES-EMEA-MKG-BRO-0008-A4 | 08/23  
© 2023 Resideo Technologies, Inc.  
Amazon, Alexa and all related  
logos are trademarks of  
Amazon.com, Inc. or its affiliates.

**For more information**  
[resideo.com](https://resideo.com)